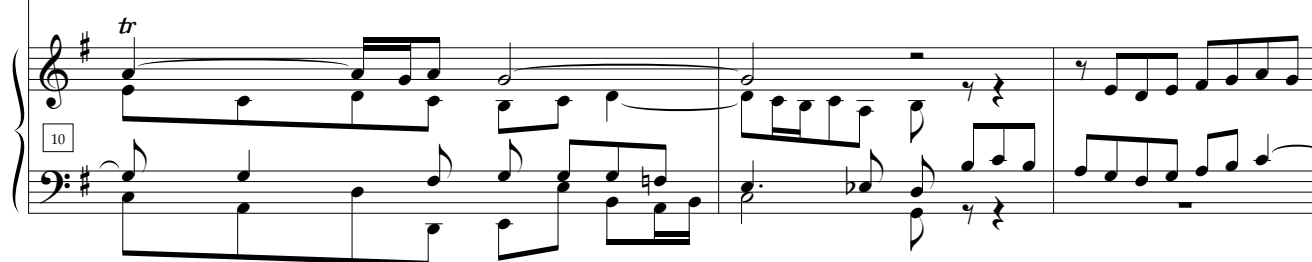
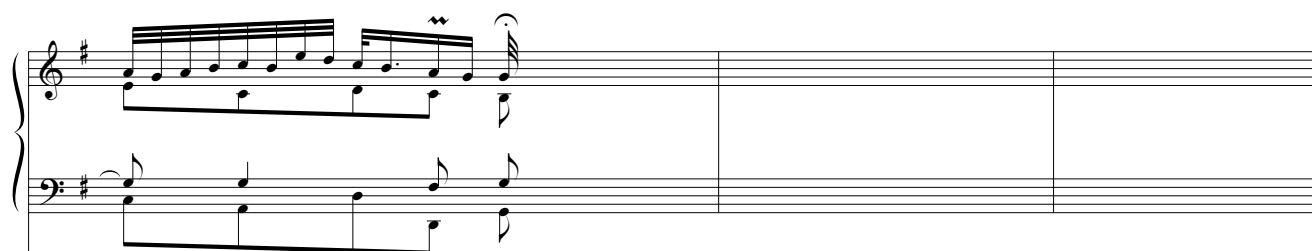
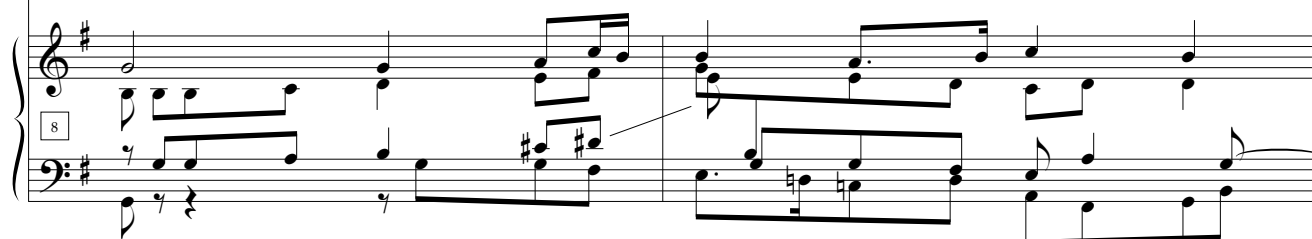
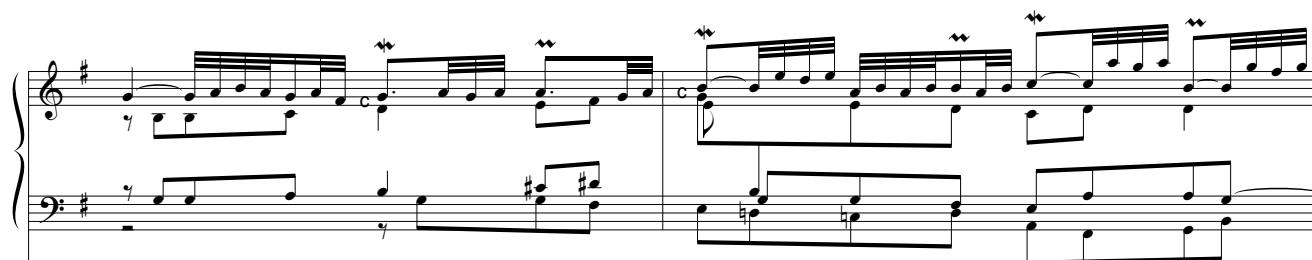
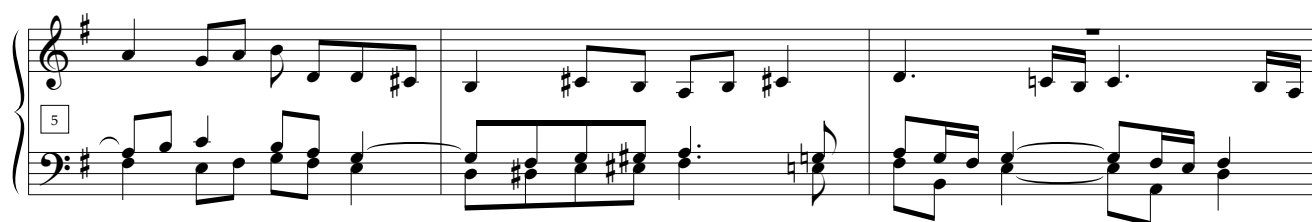
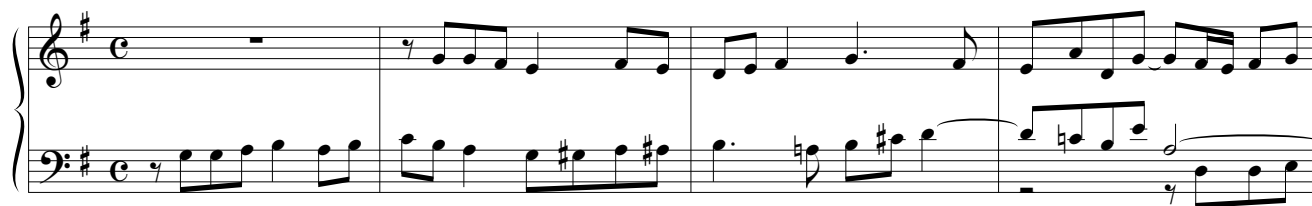


BWV 641 (Wenn wir)
vs
BWV 668 (Vor deinen Thron)

transcription Panagiotis Adam

J.S.Bach



System 1, measures 13-15. The key signature is one sharp (F#). The right hand features a melodic line with eighth and sixteenth notes, while the left hand provides a rhythmic accompaniment with eighth notes and rests.

System 2, measures 16-18. The right hand continues the melodic development with slurs and ties. The left hand maintains a steady eighth-note accompaniment.

System 3, measures 19-20. Measure 19 features a complex sixteenth-note figure in the right hand. Measure 20 shows a continuation of this texture with some rests in the right hand.

System 4, measures 21-22. Measure 21 has a melodic phrase in the right hand. Measure 22 shows a continuation of the piece with some rests in the right hand.

System 5, measures 23-25. Measures 23 and 24 show a melodic phrase in the right hand. Measure 25 is a whole rest in the right hand, with the left hand continuing its accompaniment.

System 6, measures 26-29. Measures 26 and 27 show a melodic phrase in the right hand. Measures 28 and 29 show a continuation of the piece with some rests in the right hand.

System 1, measures 24-26. The key signature is one sharp (F#). The music is written for piano in treble and bass staves. Measure 24 starts with a treble staff containing a half note F#4, a quarter note G#4, and a quarter note A4, followed by a half note B4 and a quarter note C5. The bass staff contains a half note F#3, a quarter note G3, and a quarter note A3, followed by a half note B3 and a quarter note C4. Measure 25 continues with similar patterns. Measure 26 features a treble staff with a half note F#4, a quarter note G#4, and a quarter note A4, followed by a half note B4 and a quarter note C5. The bass staff contains a half note F#3, a quarter note G3, and a quarter note A3, followed by a half note B3 and a quarter note C4.

System 2, measures 27-29. The key signature is one sharp (F#). The music is written for piano in treble and bass staves. Measure 27 starts with a treble staff containing a half note F#4, a quarter note G#4, and a quarter note A4, followed by a half note B4 and a quarter note C5. The bass staff contains a half note F#3, a quarter note G3, and a quarter note A3, followed by a half note B3 and a quarter note C4. Measure 28 continues with similar patterns. Measure 29 features a treble staff with a half note F#4, a quarter note G#4, and a quarter note A4, followed by a half note B4 and a quarter note C5. The bass staff contains a half note F#3, a quarter note G3, and a quarter note A3, followed by a half note B3 and a quarter note C4.

System 3, measures 30-31. The key signature is one sharp (F#). The music is written for piano in treble and bass staves. Measure 30 starts with a treble staff containing a half note F#4, a quarter note G#4, and a quarter note A4, followed by a half note B4 and a quarter note C5. The bass staff contains a half note F#3, a quarter note G3, and a quarter note A3, followed by a half note B3 and a quarter note C4. Measure 31 continues with similar patterns.

System 4, measures 32-34. The key signature is one sharp (F#). The music is written for piano in treble and bass staves. Measure 32 starts with a treble staff containing a half note F#4, a quarter note G#4, and a quarter note A4, followed by a half note B4 and a quarter note C5. The bass staff contains a half note F#3, a quarter note G3, and a quarter note A3, followed by a half note B3 and a quarter note C4. Measure 33 continues with similar patterns. Measure 34 features a treble staff with a half note F#4, a quarter note G#4, and a quarter note A4, followed by a half note B4 and a quarter note C5. The bass staff contains a half note F#3, a quarter note G3, and a quarter note A3, followed by a half note B3 and a quarter note C4.

System 1, measures 35-37. The key signature is one sharp (F#). The music is in 4/4 time. Measure 35 starts with a treble clef and a bass clef. The treble staff has a half note F#4, a quarter note G#4, and a quarter note A4. The bass staff has a half note F#3, a quarter note G#3, and a quarter note A3. Measure 36 continues with similar patterns. Measure 37 ends with a quarter rest in the treble and a quarter note F#3 in the bass.

System 2, measures 38-40. Measure 38 has a treble staff with a half note F#4, a quarter note G#4, and a quarter note A4, and a bass staff with a half note F#3, a quarter note G#3, and a quarter note A3. Measure 39 has a treble staff with a half note F#4, a quarter note G#4, and a quarter note A4, and a bass staff with a half note F#3, a quarter note G#3, and a quarter note A3. Measure 40 has a treble staff with a half note F#4, a quarter note G#4, and a quarter note A4, and a bass staff with a half note F#3, a quarter note G#3, and a quarter note A3.

System 3, measures 41-43. Measure 41 has a treble staff with a half note F#4, a quarter note G#4, and a quarter note A4, and a bass staff with a half note F#3, a quarter note G#3, and a quarter note A3. Measure 42 has a treble staff with a half note F#4, a quarter note G#4, and a quarter note A4, and a bass staff with a half note F#3, a quarter note G#3, and a quarter note A3. Measure 43 has a treble staff with a half note F#4, a quarter note G#4, and a quarter note A4, and a bass staff with a half note F#3, a quarter note G#3, and a quarter note A3.

System 4, measures 44-46. Measure 44 has a treble staff with a half note F#4, a quarter note G#4, and a quarter note A4, and a bass staff with a half note F#3, a quarter note G#3, and a quarter note A3. Measure 45 has a treble staff with a half note F#4, a quarter note G#4, and a quarter note A4, and a bass staff with a half note F#3, a quarter note G#3, and a quarter note A3. Measure 46 has a treble staff with a half note F#4, a quarter note G#4, and a quarter note A4, and a bass staff with a half note F#3, a quarter note G#3, and a quarter note A3.

System 5, measures 47-49. Measure 47 has a treble staff with a half note F#4, a quarter note G#4, and a quarter note A4, and a bass staff with a half note F#3, a quarter note G#3, and a quarter note A3. Measure 48 has a treble staff with a half note F#4, a quarter note G#4, and a quarter note A4, and a bass staff with a half note F#3, a quarter note G#3, and a quarter note A3. Measure 49 has a treble staff with a half note F#4, a quarter note G#4, and a quarter note A4, and a bass staff with a half note F#3, a quarter note G#3, and a quarter note A3.

System 6, measures 50-52. Measure 50 has a treble staff with a half note F#4, a quarter note G#4, and a quarter note A4, and a bass staff with a half note F#3, a quarter note G#3, and a quarter note A3. Measure 51 has a treble staff with a half note F#4, a quarter note G#4, and a quarter note A4, and a bass staff with a half note F#3, a quarter note G#3, and a quarter note A3. Measure 52 has a treble staff with a half note F#4, a quarter note G#4, and a quarter note A4, and a bass staff with a half note F#3, a quarter note G#3, and a quarter note A3.