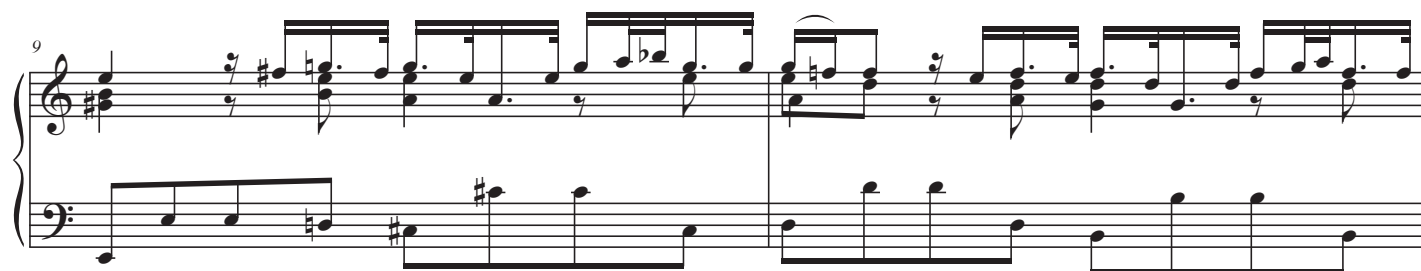
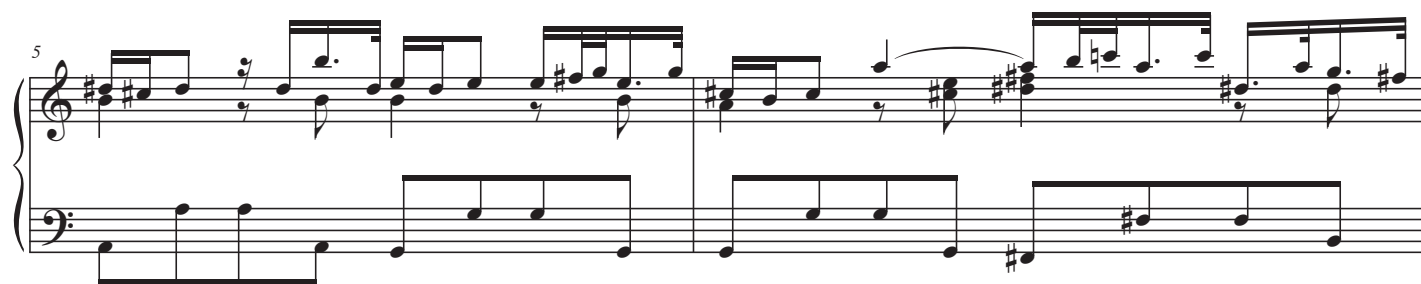


Adagio

(from BWV 564)

Transcription: Panagiotis Adám

J.S.Bach



11

System 11: Treble clef staff contains a complex melodic line with many beamed sixteenth and thirty-second notes, including a trill. Bass clef staff contains a simpler accompaniment with eighth and quarter notes. A key signature change to one sharp (F#) is indicated by a sharp sign on the F line.

13

System 13: Treble clef staff continues the complex melodic line. Bass clef staff continues the accompaniment. A key signature change to two flats (Bb, Eb) is indicated by flat signs on the B and E lines.

15

System 15: Treble clef staff continues the complex melodic line. Bass clef staff continues the accompaniment. A key signature change to one sharp (F#) is indicated by a sharp sign on the F line.

17

System 17: Treble clef staff continues the complex melodic line. Bass clef staff continues the accompaniment. A key signature change to two flats (Bb, Eb) is indicated by flat signs on the B and E lines.

19

System 19: Treble clef staff continues the complex melodic line. Bass clef staff continues the accompaniment. A key signature change to one sharp (F#) is indicated by a sharp sign on the F line.

21

System 21: Treble clef staff continues the complex melodic line. Bass clef staff continues the accompaniment. The system concludes with a double bar line and a final chord in the bass clef.